

SHAKE H GmbH

Nicolaus -F- Johannsen Weg 6, 24582 Bordesholm
 Tel.: 04322-750 268 Fax.: 04322-750 263
mail@shake-gmbh.de www.shake-gmbh.de



SHAKE GmbH

Computertomograph SHAKE SHR CT 70 for work piece analysis and 3-D-measurement

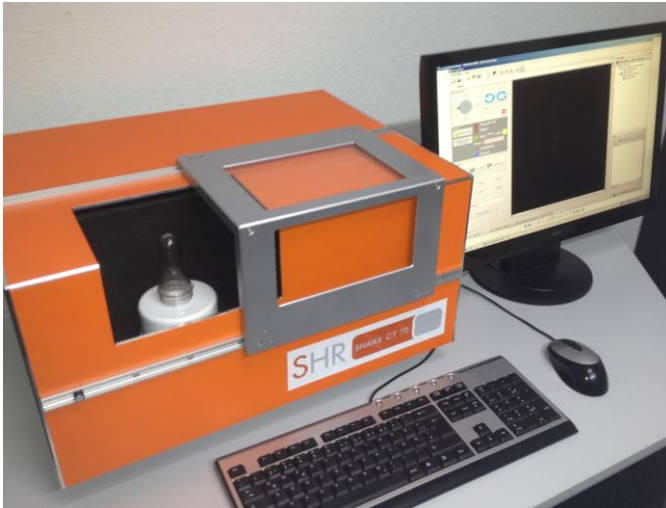
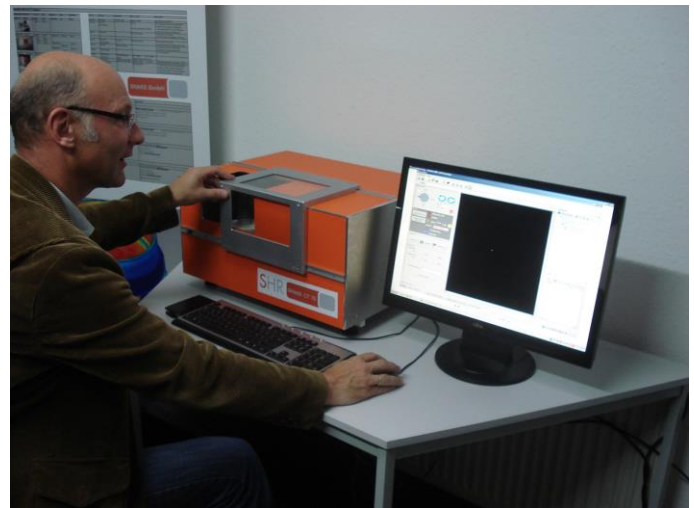
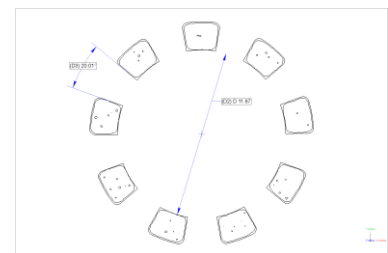
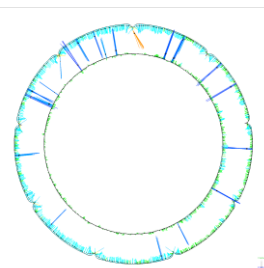
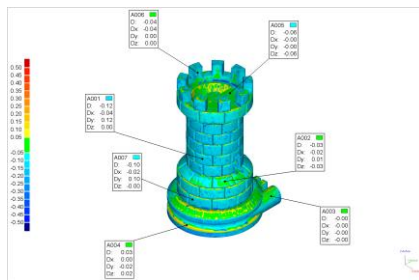


Image: 3-D-X-Ray CT-Scanner SHR-CT70



ergonomic workstation

Example:
 Measurement of
 plastic tower



Explanation:

SHAKE CT SHR 50 is designed for three-dimensional measurement and work piece analysis as well as it is designed for crack-finding.

With the 3-D-X-Ray system it is possible to ray through objects with a diameter up to 50 mm.

Combined with the fast reconstruction dimensional volume models are getting calculated (virtual work piece), on which a size-oriented analysis can be done.

Specifications SHAKE SHR CT 50 - 70 3D CNC

Equipment:	
Tube potential	70 KV
Tube current	1mA
Power admission of the tube	50 W
Fokusspot:	< 50 µm
Size of the detector	1024 x 1024 Pixel
Pixel size	48 µm
Detector surface	50 x 50 mm ²
Turning axis number of angle	200 up to 400 angles
Hard Zoom	1,3 -2,5 x
Object size	up to 35 mm diameter
Dimension (lxdxh)	Approx. 550 x400 x 330 mm
Weight	Approx. 50 kg

